

# IVM 4M Series NAMUR Solenoid Valve



## Introduction

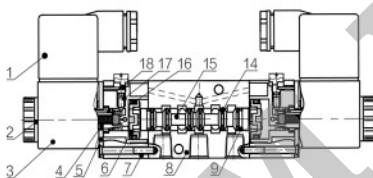
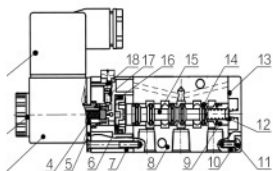
4M series NAMUR solenoid valve, port size ranges from 1/8" to 1/2". Among which 4M310 -08 are international standard and 4M310-08G series are 5/2 way to 3/2 way inter-changable. The spool of 4M series Namur valve, is cutted and one-timemachined from superior aluminum alloy rod , by high precision CNC machine; Valve body use strong aluminum alloy ,ensuring clean and rigid thread. Dynamic and static armature made by Japan-imported hybrid machining center at one time with Germanyimported stainless steel material, ensuring high accuracy and rapid magnetizing and . demagnetizing; Integral coating of coil by thermosetting BMC ,ensuring IP65 protection, low temperature rise, longer service life. Specialized Machining + Assembly + Testing automation production streamlines, ensuring high quality stability and consistency of 4M series NAMUR solenoid valve,supported by special low power technology, low power, low temperature rise, PLC directly connection, long life!

## Supply Chain

- Imported seal
- Imported grease
- Germany stainless steel
- High precision mould
- Strength aluminium

## Main Product Features

- Dynamic/static armature made of Germany stainless steel material, fast response
- Mould of pilot seat is made by top-level supplier, high precision for plastic parts.
- Spool one- time-machined from superior aluminum alloy rod , by high precision Japan CNC
- Valve body use 6061-T6 aluminum alloy ,ensuring clean and rigid thread.
- Special mini filter is designed on pilot exhaust port, cleaner inner air
- Integral coated coil by thermosetting BMC, IP65 protection, low temperature rise, longer life
- Machining + Assembly + Testing automation production streamlines, high stability and consistency
- Function various 5/2,3/2,5/3, solenoid control,air control,size ranges 1/8"-1/2"



NO.	Part name	Material
1	Connector	Engineering plastic
2	Nut	POM+Carbon steel
3	Coil	Cu
4	Pilot units	
5	Plate	Carbon steel
6	Piston	POM
7	Pilot seat	Engineering plastic
8	Valve body	Aluminum alloy
9	Spool	Aluminum alloy

NO.	Part name	Material
10	O-ring	HNBR
11	Rear cover	Engineering plastic
12	Filter	Synthetic material
13	Piston	POM
14	Spring	Stainless steel
15	Manual override	Engineering plastic
16	Back seat	Aluminum alloy
17	Spring seat	Aluminum alloy
18	C-type buckle	65Mn

## Order Code

4M
Specification Code
5/2(3) Port Solenoid Valve

1
Series
1:100 Series
2:200 Series
3:300 Series
4:400 Series

10
Coil & Position
10:Single Coil Double Position
20:Double Coil Double Position
30C:Double Coil Three - position Closed Type
30E:Double Coil Three - position Closed Type
30P:Double Coil Three - position Closed Type

6
Coil & Position
M5:M5×0.8
06:G1/8
08:G1/4
10:G3/8
15:G1/2

AC220V
Voltage
DC12V
DV24V
AC24V 50/60Hz
AC110V 50/60Hz
AC220V 50/60Hz
AC380V 50/60Hz

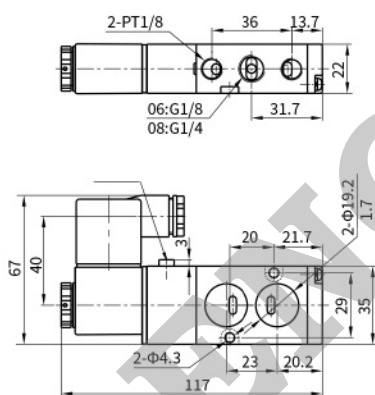


# Technical Specifications

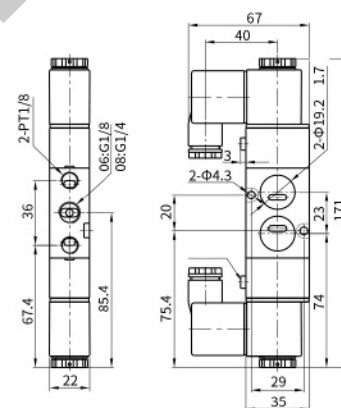
Model	4M110-M5 4M120-M5	4M110-06 4M120-06	4M210-06 4M220-06	4M210-08 4M220-08	4M310-08 4M320-08	4M310-10 4M320-10	4M410-15 4M420-16
Working Media	Air						
Action Mode	Internal Pilot Type						
Position	5/2 Port						
Effective Sectional Area	5.5MM²(Cv=0.31)	12.0mm²(Cv=0.67)	14.0mm²(Cv=0.78)	16.0mm²(Cv=0.89)	25.0mm²(Cv=1.40)	30.0mm²(Cv=1.68)	50.0mm²(Cv=2.79)
Port Size	Input=Output=M5×0.8	Input=Output=G1/8		Input=G1/4, Exhaust port=G1/8	Input=Output=G1/4	Input=G3/8, Exhaust port=G1/4	Input=Output=G1/2
Lubrication	No Need						
Working Pressure	0.15-0.8Mpa						
Proof Pressure	1.0Mpa						
Working Temperature	0~60℃						
Voltage Range							
Power Consumption	AC:2.8VA DC:2.8W		AC:5.5VA DC:4.8W				
Insulation Grade	F Level						
Protection Class	IP65(DIN40050)						
Connecting Type	Plug Type						
Max. Operating Frequency	5 Cycle/Sec						
Min.Excitation Time	Aluminum Alloy						
Material	NBR						

## Dimension in mm

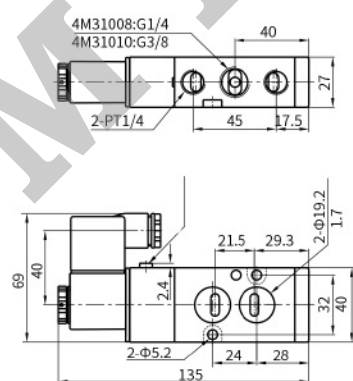
4M210DIN



4M220DIN



4M310DIN



4M320DIN

